





PALACE TOURS
Travel Like Royalty


PALACE TOURS

Rovos Rail Golf Safari: A 9-Night Luxury Train Adventure through Southern Africa's Premier Golf Courses

9 Nights • Luxury Experience

 www.palacetours.com

 travel@palacetours.com

 786-408-0610

 www.palacetours.com

 travel@palacetours.com

 786-408-0610

Overview

Embark on Rovos Rail's 9-night Golf Safari, a meticulously crafted journey that combines the timeless elegance of luxury train travel with the thrill of playing on Southern Africa's most prestigious golf courses. This unique expedition begins and ends in Pretoria, guiding you through a captivating landscape of diverse cultures and breathtaking natural beauty. As your train glides across the continent, you'll have the opportunity to tee off at world-renowned courses while non-golfing companions enjoy a parallel itinerary of enriching excursions.

The Golf Safari is designed for both the ardent golfer and the discerning leisure traveler. Golfers will find themselves challenged by championship courses like Sun City's Gary Player and Lost City, the scenic Champagne Sports Resort nestled in the Drakensberg, the historic Durban Country Club, and the exclusive Highland Gate. Each course offers a unique blend of strategic play and stunning backdrops, from volcanic craters to mountain ranges and coastal vistas. Meanwhile, leisure guests delve into the rich history and vibrant wildlife of the region, with game drives in Pilanesberg and Hluhluwe-Imfolozi Park, cultural visits to eSwatini, and city explorations in Durban and Dullstroom. This journey is more than just a tour; it's an immersive experience, where every detail, from the gourmet dining on board to the carefully planned excursions, is orchestrated to perfection, offering a luxurious and unforgettable exploration of Southern Africa's golfing and natural treasures.

Images: Courtesy - Rovos Rail

Your Itinerary



DAY 1

PRETORIA / RUSTENBURG

As the Rovos Rail glides away from Pretoria, you feel a wave of anticipation wash over you.

The gentle rhythm of the train lulls you into a state of tranquility, allowing you to savor the stunning landscapes of South Africa unfold beyond your window. Each passing moment fills you with a sense of connection to this rich land, steeped in history and culture. Arriving in Rustenburg, you are enveloped by the warmth of its heritage, and the promise of adventure at the nearby Pilanesberg Mountains ignites your spirit.

DAY 2

HEIDELBERG / PILANESBERG NATIONAL PARK / SUN CITY

You awaken to the soft hum of the Rovos Rail, the anticipation of the day ahead wrapping around you like a warm embrace. As you arrive at Pilanesberg National Park, a rush of exhilaration fills your heart; the vast wilderness opens up before you, a reminder that nature's beauty is a powerful antidote to life's chaos.

The thrill of encountering the Big Five ignites your spirit, connecting you to something larger than yourself. Later, as you stroll through the opulent grounds of Sun City, the laughter of fellow travelers mingles with the gentle rustle of palm leaves, creating a symphony of joy.





DAY 3

GLENCOE / LADYSMITH / MAJUBA HILL / NEWCASTLE

As you gaze out at the rolling landscapes of Glencoe, a profound sense of connection washes over you, intertwining with the stories of the land. The echoes of history resonate within, from the first battle of the Anglo Boer War to the serene beauty of Ladysmith, inviting you to reflect on the journey of resilience and courage.

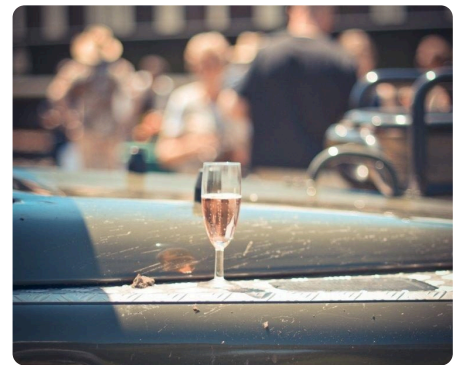
In this moment aboard the Rovos Rail, you find peace and joy, savoring each meal thoughtfully prepared as you traverse the majestic Majuba Hill. With every passing vista, memories are etched into your heart, transforming your understanding of Southern Africa's rich heritage and leaving you with a deep-seated appreciation for its vibrant culture.

DAY 4

CHAMPAGNE SPORTS RESORT / CHIEVELEY / SPIONKOP

You awaken to the gentle rhythm of the Rovos Rail, the dawn light spilling over the rolling hills of the Drakensberg.

At Champagne Sports Resort, with your golf clubs in hand, you feel a surge of excitement as the breathtaking course unfolds before you, each swing echoing laughter and camaraderie that enriches your spirit. Later, as you savor a historical narrative at the Battle of Spionkop, a profound connection to South Africa's past envelops you, stirring a deep appreciation for the land's rich heritage.





DAY 5

COTSWOLD DOWNS / DURBAN / MT EDGECOMBE / UMHLANGA

You awaken to the soft clinking of fine china as breakfast is served in the luxurious dining car, anticipating the vibrant day ahead in Durban.

The city, rich in Indian and Zulu influences, envelops you in warmth as you wander through the tranquil Durban Botanical Gardens, where every fragrant bloom evokes a sense of peace and connection to nature. As you stroll along Umhlanga's stunning beachfront, the sun glistens on the ocean, filling your heart with joy and a profound appreciation for life's beauty.

DAY 6

ESWATINI / HLUHLUWE / MPAKA

As dawn breaks over the verdant hills of Hluhluwe, you awaken to the promise of adventure, the aroma of fresh coffee mingling with the crisp morning air.

Today, you feel a deep connection to the wild, your heart racing with anticipation as you set out on a thrilling game drive through the oldest proclaimed reserve in Africa, where the majesty of nature unfolds before your eyes. Returning to the luxury of the Rovos Rail, you savor a sumptuous lunch while the scenery shifts to the enchanting Kingdom of eSwatini.





DAY 7

KOMATIPOORT / MALELANE / MKHAYA RESERVE / ROYAL SWAZI SUN / SWAZI CANDLES

You awaken to the gentle sway of the Rovos Rail, the aroma of fresh breakfast wafting through the dining car, and a sense of excitement fills the air as you prepare for a day of exploration in the Kingdom of eSwatini.

The thrill of the game drive at Mkhaya Game Reserve invites you to connect with nature, igniting a deep appreciation for the endangered wildlife that calls this sanctuary home. Your visit to Swazi Candles is an enchanting experience, where vibrant colors and artisan craftsmanship come alive, touching your heart and sparking joy in every creation.

DAY 8

DRAKENSBERG / KRUGER NATIONAL PARK

As dawn breaks in the Drakensberg, you savor the first light filtering through the dining car, a moment that feels almost sacred.

Each bite of breakfast carries the warmth of camaraderie, igniting a sense of connection with fellow travelers who share your passion for discovery. In the vast expanse of Kruger National Park, your heart races with the thrill of the wild; the roar of a lion echoes in the distance, a reminder of nature's raw beauty.





DAY 9

DULLSTROOM / HIGHLAND GATE / WALKERSON'S HOTEL

You awaken to the soft whispers of Dullstroom, where the crisp mountain air fills your lungs, igniting a sense of peace.

As you indulge in a sumptuous breakfast aboard the luxury train, the anticipation of the day ahead stirs within you, a blend of excitement and serenity. Your heart swells with joy as you step onto the lush greens of Highland Gate Golf & Trout Estate, where each swing connects you deeper to the breathtaking Southern Africa landscape.

DAY 10

PRETORIA

As the sun rises over Pretoria, you reflect on the transformative journey that has unfolded within you. The gentle rhythm of the luxury train has soothed your spirit, while the breathtaking landscapes of Southern Africa have ignited a sense of wonder. Memories of laughter shared over exquisite meals and the camaraderie forged with fellow travelers fill your heart with joy.

Arriving at Rovos Rail Station, you feel a profound connection to this vibrant city and its rich history. The thrill of discovering its iconic landmarks intertwines with the friendships you've nurtured, leaving you with a lasting sense of peace and fulfillment, ready to embrace the world anew.



Tips & Travel Guide

Check-in Information

For your Rovos Rail Golf Safari, check-in is at Rovos Rail Station, 1 Transnet Avenue, Capital Park, Pretoria, South Africa. Guests are requested to check-in a minimum of one hour before departure. If you wish to visit the museum or take a site tour at the station, it is recommended to arrive two hours prior. Passports are required at check-in, and luggage will be tagged and placed in your suite, where a full itinerary pack will await you.

Dining Schedule

Meals on board are served in one sitting in the elegant dining cars, accompanied by a selection of fine South African wines. A gong heralds lunch and dinner. Breakfast is served from **07:00-10:00**, Lunch at **13:00**, Tea at **16:30**, and Formal Dinner at **19:30**. Bar service is available from **07:00-01:00** daily, unless otherwise stated in the itinerary.

Dress Code

Days on board: Smart casual attire is recommended, combining neat, conventional, yet relatively informal clothing. For **Dinner on board:** Formal attire is required. For gentlemen, a jacket and tie are a minimum requirement (from 2024, a collar and tie will be mandatory, while a jacket is optional). Ladies are encouraged to wear cocktail/evening dresses or suits. On long journeys, themed evenings (e.g., 'Africa' or '1920s' themes) may allow for themed dress-up or smart casual. For **Off-train excursions and game drives:** Comfortable walking shoes, sun lotion, and hats are advised. Mornings can be cool, warming up considerably, while afternoons can be warm, cooling down. Rain capes are available. Golf courses have specific dress codes, so consult the Golf Course Information section.

Electricity & Connectivity

The train operates on 220V AC 50Hz. Suites are equipped with 3-point round-pronged wall plugs and 110V/220V 2-pin plugs for shavers and chargers, along with USB ports. International adaptors are available. While a generator supplies power, be aware that occasional breaks in power are necessary for servicing. Mobile phone and laptop use is confined to suites. Wi-Fi is available at Rovos Rail lounges in Cape Town and Pretoria, and at most off-train accommodation, though not always guaranteed. On board, reception can be poor while the train is moving.

Climate & Weather

Southern Africa experiences varied climates. Mornings on excursions and game drives can be cool, warming up considerably, while afternoons can be warm then cool down considerably. Warm clothing, comfortable shoes, hats, and sun protection are advised. Electric under-blankets are fitted on beds for cooler nights. For specific temperature ranges by area and month, refer to the detailed table provided in your itinerary pack.

Onboard Amenities

Each suite receives a complete amenity bag with South African biodegradable/recyclable products: soap (40g), bamboo tissues, shampoo (50ml), hand/body wash (50ml), hand/body lotion (50ml), lip balm (15ml/7g), insect repellent spray (100ml for journeys over 4 days), reusable bamboo rounds, bamboo ear buds, and a compostable shower cap. Plug-in hairdryers are available, as are sun cream, shoe mitts, nail files, sewing kits, ear plugs, and insect repellent. A limited laundry service (10 items/day) is available with a 48-hour turnaround; dry-cleaning is not available. Dressing gowns and

Medical Information

Guests are responsible for ensuring they are capable of undertaking tours and activities. Rovos Rail is equipped with a standard medical kit, oxygen, automated external defibrillator, and a wheelchair. Private healthcare hospitals are available in South Africa, but not guaranteed elsewhere. Train Managers are First Aid Level 3 trained. Anti-malarial precautions are recommended, as eSwatini, Kruger Park, and other areas on the route are malaria-risk zones.

Recommended immunisations include Hepatitis A + B, Polio, Tetanus, and Cholera (low risk). A Yellow Fever/Medical Exemption Certificate is essential for travel to/from DRC and Angola, and may be required by countries visited after your trip. Consult your clinic or doctor; Travel Doctor Africa can be reached at 0861 300 911 (local) or +27 (0) 11 214 9030 (international).

Luggage

Luggage can be stored in your suite under the bed or above the door on a luggage rack. While there are no strict restrictions on board, two large suitcases are generally sufficient. For overnight trips or hand luggage on aircraft, a soft bag is preferable, with a weight restriction of 15kg for flights.

Currency


In South Africa, Rands are accepted, and major credit cards are taken on the train. Outside South Africa, Rands are accepted in Namibia and eSwatini. US Dollars are accepted in Zimbabwe, Tanzania (Dar es Salaam only), DRC, and Angola. Cash is highly recommended in these areas. US Dollars printed before 2013 or worn notes are not accepted. Low denominations are recommended for shopping/gratuities, while larger denominations are better for exchanging to local currency, especially in Tanzania.

Departure Dates & Rates

DEPARTURE DATE	CLASS / CABIN	SINGLE	DOUBLE (PP)
Oct 7, 2026	Deluxe Suite	\$250,000	\$178,000
	Pullman Suite	\$175,000	\$125,000
	Royal Suite	—	\$236,000
Oct 21, 2026	Deluxe Suite	\$250,000	\$178,000
	Pullman Suite	\$175,000	\$125,000
	Royal Suite	—	\$236,000
Jan 5, 2027	Deluxe Suite	\$270,200	\$193,000
	Pullman Suite	\$190,400	\$136,000
	Royal Suite	—	\$256,000
Jan 26, 2027	Deluxe Suite	\$270,200	\$193,000
	Pullman Suite	\$190,400	\$136,000
	Royal Suite	—	\$256,000
Mar 16, 2027	Deluxe Suite	\$270,200	\$193,000
	Pullman Suite	\$190,400	\$136,000
	Royal Suite	—	\$256,000
Sep 28, 2027	Deluxe Suite	\$270,200	\$193,000
	Pullman Suite	\$190,400	\$136,000
	Royal Suite	—	\$256,000
Oct 19, 2027	Deluxe Suite	\$270,200	\$193,000
	Pullman Suite	\$190,400	\$136,000

Rates shown in South African Rand (ZAR). Approximate USD equivalents available upon request.

Rates shown are per person. Single rate applies to single occupancy; Double rate applies per person in double occupancy.

 **Look for Coupons and Special Rates on our website.**

Visit <https://www.palacetours.com/tour/rovos-rail-golf-safari-9-night> for the latest information.

Terms & Conditions

Payment Terms

25% of total tour cost due at the time of booking. 75% balance due no later than 65 days prior to tour departure date. All reservations are subject to availability and will be confirmed upon receipt of the required deposit. A provisional booking will be held for 14 days, after which the 25% deposit is due.

Cancellation Fees

Timeframe Before Departure	Cancellation Fee
More than 95 days	10% of total tour price
95–66 days	25% of total tour price
65–36 days	50% of total tour price
35 days or less / failure to travel	100% of total tour price (no refund)

A 5% Administrative Fee will be charged by Palace Tours on any applicable refunds. All cancellation fees apply to the full tour price before any discounts or coupons. Cancellation insurance is compulsory as these fees will not be waived. All cancellation requests must be submitted in writing.

Change of Date / Name / Occupancy

Changes may be requested up to 125 days prior to departure and are subject to availability and supplier approval. No changes will be permitted within 65 days prior to departure. Any request within this period will be treated as a cancellation and subject to the applicable cancellation fees. All changes may incur additional costs, which will be advised prior to confirmation. No changes will be processed without written authorization and payment of any applicable fees.

Payment Methods

Payments may be made via bank transfer or credit card. All payments must reference the booking number and be supported by proof of payment. Refunds, when applicable, will be processed to the original form of payment. Any exchange rate fluctuations or bank charges are the responsibility of the client.

What's Included

- Accommodation on board
- All meals on board
- All beverages on board
- Room service
- Limited laundry
- Excursions with a qualified guide (where applicable)
- Entrance fees as per itinerary
- Government tax
- Flights to/from Coocoulei

- Off-train accommodation (Sossusvlei and Etosha) including meals, water, tea/coffee, and breakfast juices

What's Not Included

- All off-train beverages (excluding water, tea/coffee, and breakfast juices at lodges)
- International sparkling wine
- Gratuities
- Personal expenses
- Visas
- Travel insurance
- Pre- and post-tour transfers, accommodation, and flights

Travel Insurance

Travel insurance is strongly recommended and is required to cover cancellation fees, medical emergencies, and unforeseen circumstances. Clients are responsible for securing their own insurance coverage and should travel with a copy of their policy including the insurance company name, policy number, and 24-hour medical emergency telephone number.

Passports & Visas

Valid passports and any required visas are the sole responsibility of the client and must be obtained prior to departure. Passports must have at least five blank visa pages and must be valid for at least six months from the return-home date. This tour passes through South Africa and Namibia; please confirm visa requirements for your nationality well in advance.

Health & Medical

Guests are solely responsible for ensuring they are capable of undertaking the tours and activities. Please inform us at the time of booking if you have any medical conditions, physical disabilities, or allergies. Anti-malarial precautions are recommended for certain areas visited on this itinerary, including Etosha National Park. Please consult your clinic or doctor for the latest medical advice prior to travel.

General Conditions

All services are provided subject to availability and supplier terms and conditions. Schedules, routing, and excursions are subject to change and cannot be guaranteed. Times are approximate and excursion arrangements may be altered due to operational, weather, or other factors beyond our control. The operator is not liable for loss, damage, injury, delays, or unforeseen events beyond its control. Participation in tours and related activities is voluntary and at the client's own risk.

Guest Indemnity

Although certain limited insurances have been arranged, the operator and its agents, servants, or employees shall not be liable for any loss or damage to passengers' luggage or effects. The passenger waives any claim against the operator, its servants, agents, employees, or subcontractors for any injury and/or loss of any nature whatsoever (including consequential loss) arising directly or indirectly from any aspect of the tour, including any form of transport used. This waiver binds the passenger's executors, heirs, trustees, and dependants. The passenger accepts all services and facilities voluntarily, with full knowledge that they may expose them to injury, danger, or loss.

Important Note

All timeframes are based on the local time of the destination. To allow sufficient processing time, clients must submit payment or cancellation requests with a minimum 5-day advance margin prior to the applicable deadlines.

Ready to Book Your Journey?

Contact Palace Tours for personalized rates and departure dates

 travel@palacetours.com |  786-408-0610

www.palacetours.com

500 S. Federal Hwy, Unit 3852, Hallandale Beach, FL 33008